

INOUT / STUHL,
Paola Navone



GERVASONI

1882



INOUT / STUHL,
Paola Navone

The stackable chair Inout 855 is characterised by an essential aesthetic enhanced by a high backrest. It develops around a light structure in embossed tubular aluminium, an ecological material, unique for its technical qualities. To this is added a particular weave in elastic strap, an innovative product based on synthetic rubber and propylene.

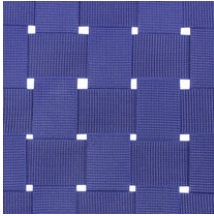
Aluminium: Aluminium offers stability over time, resistance to the weathering and easy maintenance. Moreover, it is recyclable and can be reused an infinite number of times without the slightest alteration of its technical and mechanical properties. Aluminium is processed with a powder finish, after a saline-proof treatment that inhibits the natural oxidation of this material. The subsequent powder-coating process increases resistance to corrosion while also protecting the metal against scratches and chipping. **Elastic belts:** Elastic belts, made of synthetic rubber and propylene thread, developed specifically for outdoor use, extremely resistant to UV rays, equipped with metal hooks. These products are not guaranteed when used in proximity of marine and/or chlorine environments.

GERVASONI

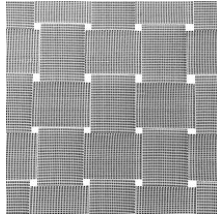
1882

Materialien

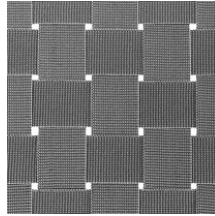
Verflechtung



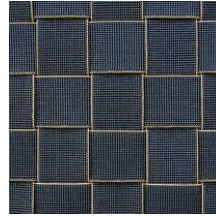
Elastische Gurte Blau



Elastische Gurte Grau



Elastische Gurte Schwarz

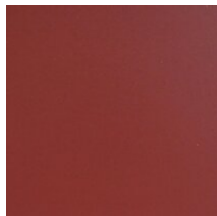


Elastische Gurte Tabak

Gestell



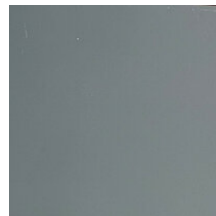
Edelstahl Agate



Edelstahl Oxido

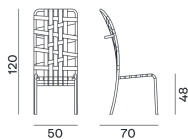


Edelstahl Pearl



Edelstahl Slate

Varianten



Inout 855