

INOOUT / TABLE,
Paola Navone



GERVASONI
1882

GERVASONI

1882



INOUT / TABLE,
Paola Navone

Family of tables born from the union of different materials, Inout 143/144 have a rectangular top and are available in various sizes. Formed of a structure in embossed painted aluminium frame, in the colours Pearl, Oxido, Agate or Slate, they have the top available in different finishes: natural teak slats, white Carrara marble or Lecce Stone stoneware, giving life to a product with extreme versatility.

Tops are finished with protective coatings, that never make the surface impervious, but are useful to slow down absorption of liquids. Cleaning: use water and a neutral detergent on the surface. Avoid direct contact with aggressive chemicals substances, solvents, ammonia, inks, oily soaps, lemon, wine, coffee. In case of contact, rinse the surface immediately and thoroughly.

Natural teak: These products are made of solid teak wood, coming from Burma plantations, Indonesia. The material is not treated, but its unique inner oily resin naturally improves its impermeability and resistance, even to insects and parasites. By exposure to the air, light and weathering, its colour changes and turns into

GERVASONI

1882

different shades of grey. A long exposure to the weathering does not prejudice the product stability, but can cause some splits into the wood. An adequate protection is therefore suggested. In some cases, the natural teak can stain light surfaces/fabrics it gets in touch with. We recommend the use of protective gliders and / or other protections, if required. By exposure to the air, light and weather, its colour changes and turns to different shades of grey, typical of old wood. This superficial oxidation contributes, with the oil moisture, to the long lasting durability of the material itself. A long exposure to different weather conditions does not prejudice the product stability, but can create cracks in the wood. An adequate protection is therefore suggested.

White Carrara marble: A naturally compact material, wear and tear resistant, suitable for dining purposes, Carrara marble is treated with a clear matt protective impregnating agent. The presence of micro holes or imperfections is to be considered an intrinsic characteristic of the natural product, claims are not accepted. For the correct maintenance, we suggest to promptly remove any stains from the surface, especially acid substances.

Lecce Stone stoneware (Inout) Lecce Stone has 6 mm thick slab with a compact surface, heat-resistant, stain-resistant, fungi & mold resistant. Cleaning instructions: cleaning products and detergents-resistant, suitable for dining purposes.

Aluminium: Aluminium offers stability over time, resistance to the weathering and easy maintenance. Moreover, it is recyclable and can be reused an infinite number of times without the slightest alteration of its technical and mechanical properties. Aluminium is processed with a powder finish, after a saline-proof treatment that inhibits the natural oxidation of this material. The subsequent powder-coating process increases resistance to corrosion while also protecting the metal against scratches and chipping.

GERVASONI

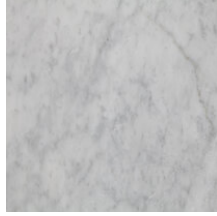
1882

Matériaux

Plateau

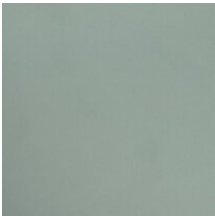


Grès Lecce Stone

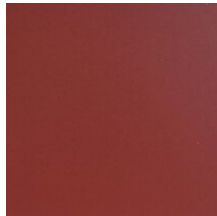


marbre blanc de Carrare

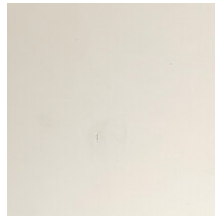
Base



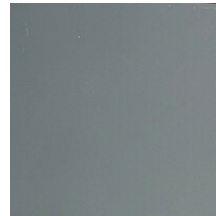
Acier inoxydable Agate



Acier inoxydable Oxido



Acier inoxydable Pearl

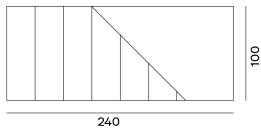


Acier inoxydable Slate

Variantes



Inout 143

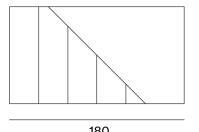


240

100



Inout 144



180

100