

GRAY / 扶手椅,
Paola Navone



GERVASONI
1882

GERVASONI

1882



GRAY / 扶手椅,
Paola Navone

Gray 26/27 is a family of dining armchairs with an enveloping backrest in the shape of a semicircle, available with padded seat and back with removable cover and visible stitching. The solid wood legs intersect, forming a cross. Solid ash wood frame, seat cushion, made of polyurethane foam and covered by white canvas.

GERVASONI

1882

材料

框架



染色水曲柳 Ashbark



染色水曲柳 Birch



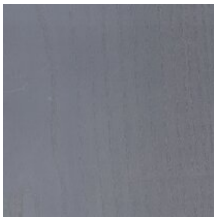
染色水曲柳 Burgundy



染色水曲柳 Chalkwood



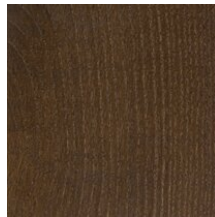
染色水曲柳 Charcoal



染色水曲柳 Larch



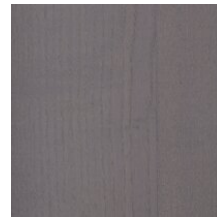
染色水曲柳 Maple



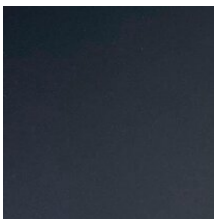
染色水曲柳 Sepia



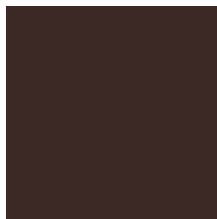
染色水曲柳 Skybark



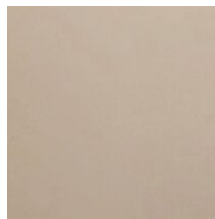
染色水曲柳 Willow



漆面灰 Blueberry



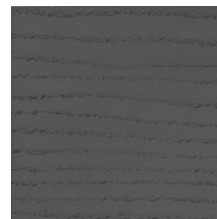
漆面灰 Date



漆面灰 Ginger



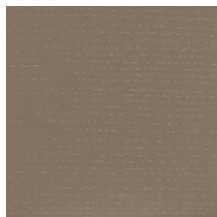
漆面灰 海洋



漆面灰 灰色



漆面灰 白色



漆面灰 鸽子灰

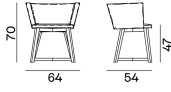


漆面灰 黑色

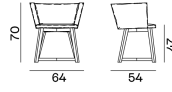
变体

GERVASONI

1882



Gray 26



Gray 27