

BRICK / TABLE,
Paola Navone



GERVASONI
1882

GERVASONI

1882



BRICK / TABLE, Paola Navone

The legs, crafted as unique handmade cylinders, appear to defy gravity as they balance atop one another, adding an unexpected twist. Two finishes are available: celadon green porcelain, fresh and luminous, or black & white volcanic sand, rougher and more tactile. The generous tabletop comes in marble or lava stone. The careful craftsmanship and material selection reach their peak here, blending sophisticated austerity with contemporary charm.

The tops are finished with protective coatings, that never make the surface impervious, but are useful to slow down absorption of liquids. Cleaning: use water and a neutral detergent on the surface. Avoid direct contact with aggressive chemicals substances, solvents, ammonia, inks, oily soaps, lemon, wine, coffee. In case of contact, rinse the surface immediately and thoroughly.

White Carrara marble: A naturally compact material, wear and tear resistant, suitable for dining purposes, Carrara marble is treated with a clear matt protective impregnating agent. The presence of micro holes or imperfections is to be considered an intrinsic characteristic of the natural product, claims are not accepted. For the correct maintenance, we suggest to promptly remove any stains from the surface, especially acid substances.

GERVASONI

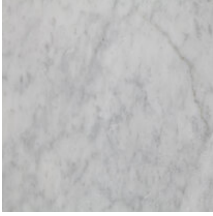
1882

Lava Stone: Wear-resistant material, polished and treated with protective impregnant. The presence of micro-holes or surface irregularities is to be considered an intrinsic characteristic of the product, not subject to complaint.

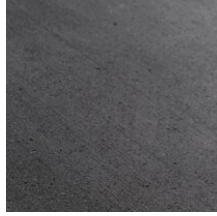
Ceramics: These products, highly handicraft made, from Indo-China, are made of glazed terracotta. Depending on the temperature level, and their exposure to the light and air during the manufacturing process, their colour can vary considerably. Due to the peculiarity of the product, a vast tolerance range has been established for the presence of plasters, repairs and scratches as well as in terms dimensions, colour and surface, which can be quite irregular. Due to technical-productive reasons linked with the artisanship of the products, the lower side, for approximately in height, can sometimes be irregular and without glazing.

Matériaux

Plateau

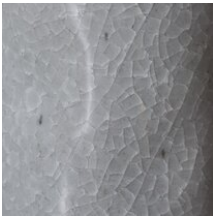


marbre blanc de Carrare



Pierre lavique poli

Pieds



Grès Émaillé Effet Craquelé Celadon

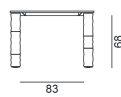


Porcelaine blanche et sable volcanique

Variantes



Brick 143 240



Brick 144 200

